

SDL Series

Annular Suction Cup

AIRBEST



METAL SHEET

RoHS

Suction Cup

Features

- ◇ Closed annular structure, consisting of inner and outer sealing lips
- ◇ Larger area hollow part inside
- ◇ Circular threaded mounting holes

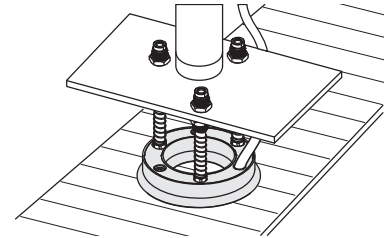
Advantages

- ◇ Good sealing
- ◇ Detection instrument can be designed in the hollow part for separation of vacuum and detection
- ◇ Firm installation



Applications

- ◇ Handling of workpieces with flat surface, such as metal sheet, steel plate, annular metal stamping parts, plywood and plastic plate



Structure

- ◇ One-piece structure of fitting and suction cup

How to order

SDL 100 N - G1F
① ② ③ ④

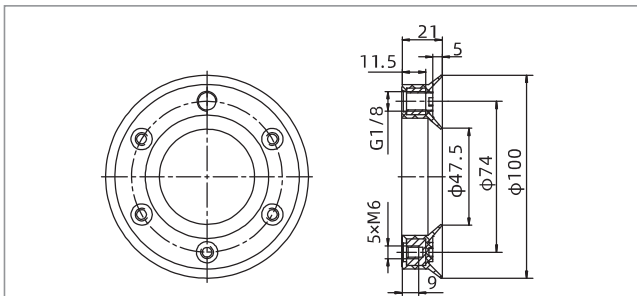
① Series	② Diameter	③ Material & Hardness	④ Connection thread
SDL	100 - ϕ 100mm	N - NBR 55	G1F - G1/8 female thread

Technical parameters

Model	Pull-out force N	Inner volume cm ³	Weight g	Recommended hose dia. mm	MPQ pcs
SDL100N-G1F	258	44	107	8	1

◇ Note: Testing vacuum level -60kPa, workpiece with smooth and clean surface. The data of pull-out force as above are figured out without considering safety factor. The data may be different according to different workpiece surfaces. Recommend the length of vacuum hose to be as short as possible, max 2m.

Dimensions(mm)



SDL100

◇ Note: The dimensional tolerance conforms to GBT3672.1-2002-1 M3 rubber product dimensional tolerance standard

SZ
SP3
SUF
SAN
SAO
SOFA
STP
SFT
SFA
SBT
SBL
SBLP
SBS
SFP
SBP
SXP
SGP
SBOF
STC
SFF
SOB
SOF
SOG
SFM
SOM
SBF
SDM
SFU
SFK
SHT
SDL
SFG
SFGT
SFD
SB
SBA
SF
SU
SPA
SPD
SPF
SPC
SPJ
SPU
SH
SHB
SBB
SOP
SNP